

Help Contents

[Are You Stuck?](#)

[About The Interactive Wine Cellar](#)

[Credits](#)

[Navigating and General Use of The Interactive Wine Cellar](#)

[Areas of The Interactive Wine Cellar](#)

[Using Sound and Video](#)

[Troubleshooting](#)

About

The Interactive Wine Cellar and its contents are copyright © 1994 Barr Interactive and World Library, Inc. All rights reserved. Unauthorized use is strictly prohibited.

Video for Windows, Windows 3.1/3.11 and Multimedia Viewer 2.0 engine are copyright © 1993 Microsoft Corporation

All other trademarks and registered trade marks are the property of their respective owners.

Barr Interactive can be reached at (818) 338-7878
World Library, Inc. can be reached at (714) 756-9500

Credits

Executive Producer

Keith A. Knostman

Associate Producer

Sharon Hustwit

Concept and Design

Keith A. Knostman

Writing and Research

Vince Valasquez

Keith A. Knostman

Julian Catalano

Cathleen Cooke

Holly Leach

Programming and Authoring

Keith A. Knostman

Video & Audio Production

Keith A. Knostman

Off-line Video

Jack Donaldson

Art Director

Dave Deal

Graphics

Dave Deal

Keith A. Knostman

Brad Driver

Michelle Hustwit

Content Editing

(Wines) George Holland,

(General) Sharon Hustwit,

Valerie Hustwit

Content Editing and Proofing

George Farina

Tina Lamperts

Sharon Hustwit

Vince Valasquez

Sales and Marketing

Valerie Hustwit (W.L.)

Jim Johnston (Barr)

Barr Media Group Team

President/CEO, Alex Bell

VP Interactive Division, Keith

A. Knostman

Director of Marketing,

Jose Valasquez

VP Product Development.

George Holland

World Library Team

VP Product Development,

Sharon Hustwit

VP Sales, Valerie Hustwit

Special thanks to "The Hobbit" in Orange, CA for providing access to their wonderful wine cellar used for the "Wine Cellar" menu. If you're ever in Orange stop by the Hobbit for a unique dining experience.

Special thanks to wine Journalist, Dennis Lowden.

Help Contents

[Are You Stuck?](#)

[About The Interactive Wine Cellar](#)

[Credits](#)

[Navigating and General Use of The Interactive Wine Cellar](#)

[Ways of Finding Information in the Program](#)

[Using Full-Text Search](#)

[Browsing Through the Results of a Search](#)

[Using Search Operators](#)

[Using Multiple Search Operators](#)

[Using the Index](#)

[Areas of The Interactive Wine Cellar](#)

[Using Sound and Video](#)

[Troubleshooting](#)

Help Contents

[Are You Stuck?](#)

[About The Interactive Wine Cellar](#)

[Credits](#)

[Navigating and General Use of The Interactive Wine Cellar](#)

[Areas of The Interactive Wine Cellar](#)

[The Wine Cellar Main Menu Screen](#)

[Quick Access Bar](#)

[Glossary and Reference Sections](#)

[Wine Screens](#)

[Wine Map Screens](#)

[Wine Region Information Screens](#)

[Using Sound and Video](#)

[Troubleshooting](#)

Help Contents

[Are You Stuck?](#)

[About The Interactive Wine Cellar](#)

[Credits](#)

[Navigating and General Use of The Interactive Wine Cellar](#)

[Areas of The Interactive Wine Cellar](#)

[Using Sound and Video](#)

[Troubleshooting](#)

[Compatability Issues](#)

[Tips on Performance](#)

[Video for Windows](#)

Are You Stuck?

Here are some easy tips to help you move through the program.

Returning to the Main Menu.

You can return to the Main Menu from anywhere within the The Interactive Wine Cellar program by using the **"Ctrl+M"** key combination. This is useful if you are stuck at a location or want to return to the main menu in order to access to other parts of the program.

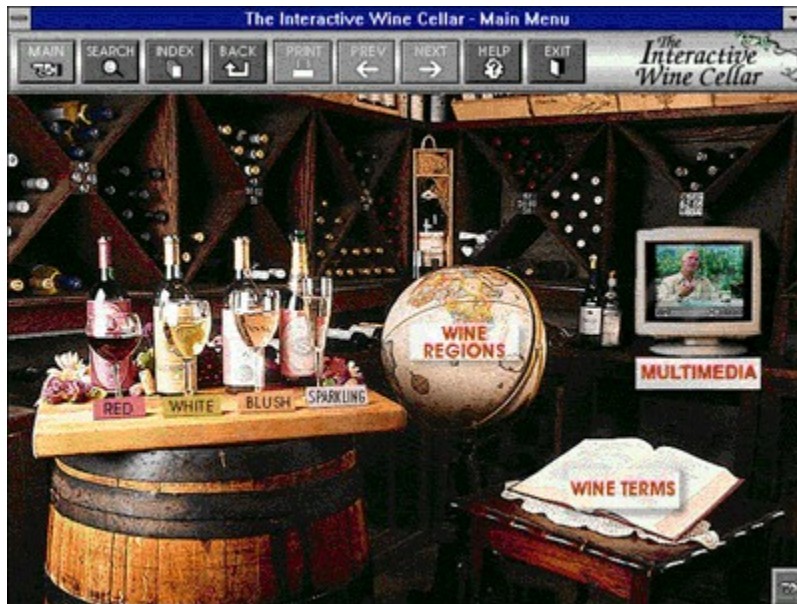
Use the Quick Access Bar.

Don't forget this handy menu bar! It enables you to go to any main area of the program without needing

to return to the main menu. You can access it by pressing the **"Ctrl+Q"** key combination or the



Main Menu Help



Click on areas of the picture above for more information.

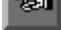
The *Wine Cellar Main Menu* is your starting point in the The Interactive Wine Cellar program. From here, you can go to any point in the program by simply clicking on an icon. Buttons on the navigation bar provide you with additional ways to browse through the program.

The *Wine Cellar* is where you start to learn about the various types of wines, the wine regions of the world and about wine terminology. Selecting areas of this menu will take you to the various wine topics in the program. Click on one of these areas on the picture above to learn about the different wine sections.

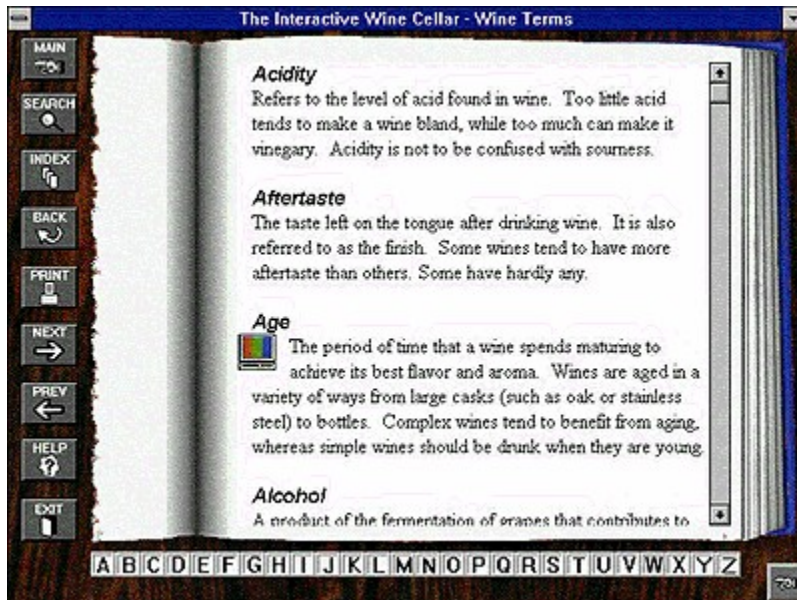
You can select the *Quick Menu Button*  to access the *Quick Menu*.

Quick Access Bar Help



The *Quick Menu* is accessed by clicking on the *Quick Menu Button*  while in an area of the program. This menu is functionally the same as the *Main Menu*, but allows you to go to any area of the title without returning to the *Main Menu* first.

Glossaries Help



Click on areas of the picture above for more information.

You can select the *Quick Menu Button*  to access the *Quick Menu*.

Wines Help



Click on areas of the picture above for more information.

Wine Regions Map Help



Click on areas of the picture above for more information.

The *Wine Map* is where you start to learn about the wine making countries of the world. Selecting a country name on the map will take you to the *Wine Region information screen* for that country.

You can select the *Quick Menu Button*  to access the *Quick Menu*.

Wine Regions Help



Click on areas of the picture above for more information.

The *Wine Region Screen* provides you with general information on the countries shown on the *Wine Region Map*. You can browse through the countries by using either the "Next" or "Prev" buttons.

You can select the *Quick Menu Button*



to access the *Quick Menu*.

Compatability Issues

None reported as of release.

Tips on Performance

Get lots of memory!!!

Memory is one of the most expensive purchases you can make for your computer, but it can also yeild substantial gains in performance. Systems with too little RAM (not to be confused with Virtual memory which uses your hard drive as pseudo memory) can see poor performance due to Windows Swapping programs and data from memory to make room for other programs. Additional memory coupled with a good disk cache (such as Symantecs Speed Cache program) can make all the difference in how well your computer runs.

Upgrade you processor and CD-ROM drive

If your still running a 386 with a single speed CD-ROM drive you are asking for heart-ache. New programs and operating systems are designed to take advantage of the newer and faster processors available today. Upgrading to a Pentium system will undoubtedly see you well into the future. A faster CD-ROM drive will help get the information to the computer faster to make those videos run as they were meant to run!.

Video for Windows

Operating and Performance Tips

Performance and the Smartdrive Disk Cache

If your computer uses the double buffering feature of MS-DOS 6, AVI files may play slowly on your computer. If your CONFIG.SYS file contains command that starts SMARTDRV with the DOUBLE_BUFFERING parameter, add the /L switch to the SMARTDrive command in your AUTOEXEC.BAT file.

If adding the /L switch doesn't increase the playback speed enough, try removing the DOUBLE_BUFFERING parameter altogether. Before you remove DOUBLE_BUFFERING parameter, consult your Windows documentation or MS-DOS Help to determine whether your computer needs the parameter to run correctly.

Audio Synchronization Problems

If you use older versions of Windows Sound System and other drivers, the audio may be out of synch with the video. Obtain updated Windows Sound System drivers from the Windows Driver Library (WDL). (For more information about the WDL, contact Microsoft Product Support.) For third-party drivers, contact your audio board manufacturer's technical support department to get an updated driver.

Sound Blaster Pro driver

If you use a Sound Blaster Pro driver, and use Media Player to play certain AVI files with a 16-bit, 22khz file format, the files will play incorrectly. The audio will play first, and then the video will play. To fix this problem, contact your sound board manufacturer for an updated driver.

ATI Video Cards and drivers

Versions of ATI's video accelerator prior to 2.1 do not work well with Video for Windows version 1.1. Installing the accelerator software after installing Video for Windows can overwrite Video for Windows version 1.1 components with components from the previous version. Avoid installing any version of the video accelerator unless it is specifically noted to be compatible with Video for Windows version 1.1.

Add or change the DeviceBitmaps=on to **DeviceBitmaps=OFF**. This will solve many problems related to ATI drivers. This setting can be found under the [mach] section of the Win.ini file for Mach32 based cards or in the [machx] section of the System.ini file for Mach64 based cards.

The vidc.rlec=ativdacc.drv entry in the [installable compressors] section of the SYSTEM.INI file can cause problems when playing large RLE-compressed movies. Remove this entry from the SYSTEM.INI file.

For update drivers, contact ATI Technologies Inc.

Using Sound and Video

Using the Multimedia Controller

You can play an audio or video sequence using a control panel that appears within a [topic](#) or that pops up when you select a hot spot. Either type of sequence may include the multimedia controller, as shown below:



Select any control from this illustration to find out what action it performs.

- ▶ To control a sequence that does not have a control panel:
 - * Click the window while the sequence is playing to stop it.
 - * Click the window after stopping the sequence to start playing it again.

Below are additional buttons that appear on the multimedia controller. Click on the button to find out what action it performs.



Play/Pause Button

Plays the object if it is currently stopped or paused, or pauses the object if it is currently playing.

Stop Button

Stops playback of the audio or video sequence.

The slider control lets you drag the thumb to move the current position back (left) or forward (right) in the audio or video sequence.

Play Button



Starts playing the object.

Pause Button



Stops playing the object until the user presses this button again or the [Play button](#).

Eject Button



Ejects the physical object from the MCI device (for example, the CD-ROM from a CD-ROM drive).

Previous Section Button



Moves playback backward to the previous section authored for the object.

Next Section Button



Moves playback forward to the next section authored for the object.

Step Backward/Fast Rewind Button



When clicked once, steps backwards (by frames or by seconds) in the object. When clicked and held down, rewinds backwards through the object.

Step Forward/Fast Forward Button



When clicked once, steps forwards (by frames or by seconds) in the object. When clicked and held down, fast forwards through the object.

Menu Button



A popup menu which lists the sections, if authored. Select a section name to move the thumb to the beginning of that section. This menu may also contain a [mute](#) or a [pause](#) option.

Pauses

When this option is selected, Viewer will pause before playing each section.

Mute

When this option is selected, the controller does not play any soundtrack while it plays the AVI sequence. In audio files, the sound is muted.

Finding Information

To find information in your title, you can use the following techniques:

- Choose topics from a keyword index
- Perform full-text searches for topic text

Using the index button, you can search on a keyword or words. When the keyword is found, Viewer displays the topic, or a list of topics containing the keyword.

Using the Search button, you can search on any word or words in the topics. The Search feature not only takes you to the topic found, but highlights the word or words found by the search. You can use search operators such as AND, OR, NOT, THRU, and NEAR to further narrow your search.

See Also

[Finding Information Using the Index](#)
[Using Full-Text Search](#)

Full-Text Search



To search for topics that contain a certain word or phrase:

- 1 Choose the [Search button](#) in the Viewer window.
- 2 In the Search by Word box, type a [search query](#) telling Viewer what text you are searching for.
To enter a search query that you've searched on previously, select the search query from the drop-down list box.
- 3 Under Search In, select All Topics, Current Topic Only, or List of Previous Topics Found.
To search only the [topic titles](#), choose the [Options button](#) and select this option, then choose the OK button.
- 4 Choose OK.
Viewer lists the title of each topic containing a [search hit](#) in the [Search Results](#) dialog box.

See Also

[Browsing Through the Search Results](#)
[Using Search Operators](#)

Search Results

When you choose the OK button to search for information, Viewer lists the [topics](#) that contain [search hits](#) in the [Search Results](#) dialog box.



To view a topic in the list:

- * Double-click the title.
Use the scroll bar to see titles not visible in the list.
or
- * Use the Search Results buttons to move through topics.

To view	Do this
Selected topic	Choose the Go To button or double-click the topic.
Search dialog box	Choose the To Search button .
Next search hit in the current topic	Choose the Next Match button .
Previous search hit in the current topic	Choose the Previous Match button .

When you view a topic with search hits, Viewer highlights the search hits in that topic. If you minimize the Search Results window, highlighting turns off until you maximize the Search Results window again.



To close the Search Results window:

- * Choose the Cancel button in the Search Results window.

For your convenience, the Search Results window always appears on top of the Viewer window. You can resize it, move it, or you can minimize it to an icon and then restore it later when you need it.

See Also

[Using Full-Text Search](#)
[Using Search Operators](#)

Search Operators

When you use the [Search button](#) to search for information, you can use the search operators AND, OR, NOT, and NEAR to narrow your search. Each operator is described below. You can enter an operator in either lowercase or uppercase letters ("and" is interpreted the same as "AND").

AND

The AND operator selects topics containing all phrases connected by AND operators. If a phrase does not appear in quotes, any space between words in the phrase is assumed to represent an implicit AND. For example:

Bees love Honey

This phrase finds any topic containing the three words "Bees," "love," and "Honey." This is the same as specifying Bees AND love AND Honey. However, when quotes are used, Viewer searches for the entire phrase. For example:

"Bees love Honey"

This phrase finds any topic containing the phrase "Bees love Honey."

OR

The OR operator selects topics containing either phrase connected by OR operators. For example:

Bees OR Honey

This query displays topics containing either the word "Bees" or the word "Honey."

NOT

The NOT operator selects any topic that does contain the phrase preceding NOT, but doesn't contain the phrase following NOT. For example:

Bees NOT Honey

This query finds topics containing the word "Bees" but not the word "Honey."

NEAR

The NEAR operator selects any topic in which one phrase appears within a certain number of words of the second phrase. The default value is 8 words. For example:

Bees NEAR Honey

This query finds any topic in which the word "Bees" appears within 8 words before or after the word "Honey."

To change the default value, choose the [Options button](#) in the Search dialog box and enter a new number in the NEAR Means Within box. Words that are next to each other are within one word of each other.

Tip: You can choose the [Hints button](#) in the Search dialog box for a quick reminder on how to use search operators.

See Also

[Using Full-Text Search](#)

[Using Multiple Search Operators](#)

Multiple Search Operators

When you use the [Search button](#) to search for information, you can use multiple search operators to define more complex search criteria. For example, if you enter **honey AND bees NOT hives** in the Search by Word box, Viewer will match [topics](#) that contain the words "honey" and "bees" but do not contain the word "hives."

By default, operators are evaluated from left to right. You can use parentheses to specify a different order--operators within parentheses are evaluated first.

This query	Searches for
honey OR bees AND hives	Topics containing either the word honey or the word bees in addition to the word hives .
honey OR (bees AND hives)	Topics containing the word bees and the word hives or topics containing the word honey .
honey OR bees NOT hives	Topics containing either the word honey or the word bees but not the word hives .
honey OR (bees NOT hives)	Topics containing the word bees but not the word hives or topics containing the word honey .

Tip: You can choose the [Hints button](#) in the Search dialog box for a quick reminder on how to use search operators.

See Also

[Using Full-Text Search](#)
[Using Search Operators](#)

Using the Index

Using the Index is like using the index of a book. You can browse through a list of keywords, and then jump to a topic by selecting a word from the index.



To look up a topic using the index:

- 1 Choose the [Index button](#) in the Viewer window.
- 2 Type the word you want to search for or select the word from the Index list.
You can press a key on your keyboard to move quickly to different parts of the list. For example, type "S" to move to words beginning with the letter "S" and then type "O" to see words beginning with "So."
- 3 Choose OK.
If only one topic is linked to the word, Viewer jumps to that topic.
If there is more than one topic linked to the word, Viewer displays the topics in the [Topics Indexed](#) dialog box.
To return to the Index, choose the [To Index button](#).
- 4 Double-click the topic you want to view, or select the topic and choose the [Go To button](#).

Searching in a Specific Index

Multiple keyword indexes are like having an index for each chapter in a book. You can select which section you want to look in when looking up keywords.



To search in a specific index:

- 1 Choose the [Index button](#) in the Viewer window.
- 2 Select the index from the Current Index drop-down list box.
- 3 Type the word you want to search for or select the word from the Index list.
- 4 Choose OK.
If only one topic is linked to the word, Viewer jumps to that topic.
If there is more than one topic linked to the word, Viewer displays the topics in the [Topics Indexed](#) dialog box.
To return to the Index, choose the [To Index button](#).
- 5 Double-click the topic you want to view, or select the topic and choose the [Go To button](#).

See Also

[Using Full-Text Search](#)

Contents (or Main) button



The Main button will return you to the Main Menu of the program.

Index button



The button that looks up topics associated with particular words or phrases in the program.

Go Back button



The button that backtracks through [topics](#) in the order you viewed them.

History button



The button that displays a list of the last 40 topics you have viewed.

Next button



The button that displays the next topic in the current browse sequence within the program.

Previous button



The button that displays the previous [topic](#) in the current [browse sequence](#) within the program.

Search button



The button that searches for all topics containing a particular word or combination of words.

Hints button



In the Search dialog box, the button that shows examples of how to enter [search queries](#).

Next Match button



The button in a list of [search hits](#) that displays the next search hit not currently displayed on the screen.

Previous Match button



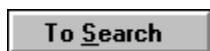
The button in a list of [search hits](#) that displays the previous search hit not currently displayed on the screen.

To Index button



The button in the Topics Indexed dialog box that takes you back to the Index dialog box.

To Search button



The button in the [Search Results](#) dialog box that takes you back to the Search dialog box.

Options button



The button in the Search dialog box that displays the available search options. The Search Options dialog box is where you can change the NEAR value, select topic titles as the search domain, or select to search from a list of previous topics found.

Go To button



The button in the [Topics Indexed](#) and the [Search Results](#) dialog box that displays the selected [topic](#) from the list.

Bookmark

A name associated with a [topic](#) for easy reference. Bookmarks appear on the Bookmark menu. When you select a bookmark from the menu, Viewer immediately displays the topic associated with that bookmark.

Clipboard

The Microsoft Windows application that holds cut or copied information that can then be inserted into another file. Whenever you use a Cut, Copy, or Paste command, you are using the Clipboard.

Contents Screen

The "table of contents" for the program. From this screen, you can select which part of the title you want to look in.

topic

A single entry or article in a title. Examples of topics might be a definition, recipe, or an entry in the Wine Glossary.

Topics Indexed

An index dialog box that lists topics from an index search which allows you to browse and go to topics in the list.

Search Results

The dialog box that lists topics containing search hits from a search query and allows you to browse and go to topics in the list.

Search Query

A combination of words, phrases, and operators telling the Search command what text to search for.

Browse Sequence

A sequence of topics arranged so that you view them in sequence when you select the



buttons.

Topic Title

A name identifying a topic found by searches from the Index and Search commands.

Jump

A hot spot that displays another topic in the main Viewer window.

Hot Spot

A word, phrase, or picture that you select to jump to a new [topic](#), display a window, or perform an author-defined operation.

Search Hit

An occurrence of text in a topic that matches the search query entered for the Search command.

Current Position

The position in an audio or video sequence that is currently being played, indicated by the thumb in the slider control.

Thumb



The pointer in the slider of a controller indicating the current position in the audio or video sequence.

Slider

The control in an audio or video sequence that contains the thumb, which indicates the current position in the audio or video sequence. The slider may also include tick marks indicating the sections in the audio or video segment.

Section

A subdivision of an audio or video sequence indicated by tick marks on the slider. Drag the thumb on the slider to any tick mark to begin playing the sequence at the corresponding section.

Wines Hot Spot(s)

Clicking on one of the wine types will open the Wine Information Window for that type of wine.

Wine Regions Hot Spot

Clicking on the globe will bring you to the Wine Regions World Map.

Wine Glossary Hot Spot

Clicking on this book will take you to the Wine Terms Glossary.

Conversions Button



Clicking on this button will open the Conversion Chart.

Quick Access Menu Button



Clicking on this button will pop-up the Quick Access Menu.

Books Hot Spots

Clicking on one of these books will take you to that section.

Print Button



The print button allows you to print the current topic. For example, you could print the recipe you are currently viewing or the discription of the wine you are looking at.

Letter Bar

The letter bar allows you to instantly change the current glossary text to any letter of the alphabet. This is quicker than using the Next or Previous buttons.

Picture Hot Spots

Clicking on these small pictures as found in some glossary entries allows you to view a zoomed version of the picture.

Scroll Bar

The scroll bar is used to view information that is off the end of the window pane. Use the up or down arrows.

Main Menu Icons

Clicking on these Icons in the Main Menu will instantly take you to the appropriate section of the product.

Recipe Picture or Video Window

This window is used to show the video or picture for the current recipe. If there are no VCR controls at the bottom of this window then it is a picture; controls indicate that it is a video and can be played.

Recipe Text Window

This window displays the text of the current recipe.

Recipe Info Pane

This window displays additional information on the current recipe such as type and category.

Video Window

This window displays the video currently selected.

Video Icon



When you see this icon in the program you can select it to bring up a video based on the current topic.

Audio Icon



When you see this icon in the program you can select it to bring up audio based on the current topic.

Help Button



The Help button opens the help system you are now using.

Exit Button



The Exit button will close the whole program.

